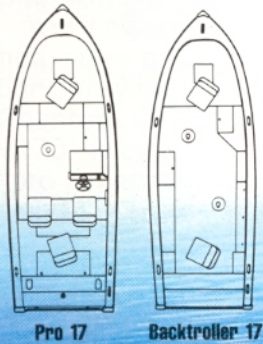


Luxury Series

■ Here are four boats that can really put a lot of luxury into your fishing or pleasure boating. From the deluxe marine carpeting to the sparkling color options, these Alumacraft beauties stand out from the crowd.



Specifications	Pro 17	Backtroller 17
Overall Length	17'5"	17'5"
Overall Width	74"	74"
Transom Height	20"	20"
Transom Width	66"	66"
Max. Equiv. Gauge**	.075	.075
Rec. H.P. Range	25-75	25-50*
B.I.A. Rated Capacity/Lbs.	1370	1385
Approx. Weight/Lbs.	750	675

*With steering installed H.P. rating 75

**Calculation of maximum equivalent gauge is based on empirical data developed by the automotive industry, and the S.A.E.'s structural requirements to compare resistance to denting for various material and thicknesses. For further information contact Alumacraft Boat Company's Engineering Department.

Features	Pro 17	Backtroller 17
Plush Olefin Marine Carpet	•	•
Stowable Running Lights	•	•
Bilge Pump	•	•
Interior Courtesy Light	•	•
Upholstered Seats	4	2
Seat Pedestal Sockets	3	4
Aerated Livewell	2/18 Gal.	24 Gal.
Lockable Rod Compartment	•	•
Lockable Storage Compartment	4	2
Prewired Switch Panel w/Indicator Lights	•	•
Console Steering w/Teak Dash Panel	•	Opt.
Windshield	Opt.	Opt.
Underfloor Accessory Wiring Channel	•	•
Prewired Bow Trolling Receptacle & Plug	•	•
Trim and Tilt Switch	•	N/A
Fwd Battery Storage w/ Hold down for 105 Amp Battery	•	•
Transom Curtain	N/A	•
Rod Holders	•	•
Cleats 4 1/2"	4	4
Stainless Steel Bow and Ski Tow Eye	•	•

Color Options: Quicksilver Grey Hull with Royal Blue or Grey Interior; Taupe Hull with Brown Interior
Optional Equipment Is Available For Dealer Installation



Deep-Vee Bass Boat Series

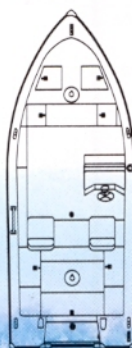
Professional fisherman Tom Zenanko says the Phantom is "the smoothest riding, high-performance bass boat I've ever been in...aluminum or glass. It's deep-vee hull is unmatched for stability, dryness and fishing performance."

You'll also like the low profile hull, slate-gray exterior and light-gray interior of both the Phantom V170 and Bandit V170. They are both loaded with "pro fisherman" features. The Bandit features an all-welded construction.

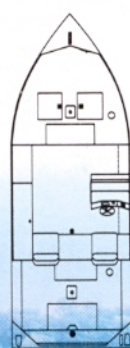
Specifications	Phantom V170	Bandit V170
Center Length	17'2"	16'10"
Maximum Depth (Outside)	31"	30"
Width	80"	72"
Transom Width	76"	69"
Transom Height	20"	20"
Hull Gauge	.090	.090
Rec. H.P. Range	60-120	50-90
B.I.A. Rated Capacity/Lbs.	1395	1135
Approx. Weight/Lbs.	925	875
Hull Style	Deep Vee	Deep Vee

Features	Phantom V170	Bandit V170
Plush Olefin Marine Carpet	•	•
Upholstered Pedestal Seats	2	2
Fixed Seats	2	2
Pedestal Sockets	3	2
Aerated Bow Livewell	18 Gal.	14½ Gal.
Aerated Livewell Aft	24 Gal.	20 Gal.
Locking Rod Storage	7'	7'
Locking Storage Compartments	6	1*
Non Locking Storage Compartments	3	4
Ice Chest	•	N/A
Windshield	•	Opt.
Tilt & Trim Switch	•	•
Bilge Pump	•	•
Volt Meter	•	N/A
High Tech Steering Console	•	•
Prewired Switch Panel w/Indicator Lights	•	•
Trolling Motor Plug and Socket with 8 Gauge wire and Circuit Breaker	•	•
Power Pedestals	Opt.	Opt.
Mooring Covers	Opt.	Opt.
Riveted/Welded Construction	R	W
Fuel Tank and Gauge	24 Gal.	N/A
Grab Rail	•	•

Color: Slate Grey Hull and Grey Interior
Optional Equipment Is Available For Dealer Installation
*Dry Storage



Phantom V170



Bandit V170



Bandit V-170

Phantom V-170



Phantom V-170
Steering Console

Canoes

Specifications	QT-15 C Quetico	QT-17 CL Quetico	QT-17 C Quetico	QT-17 WWR Quetico**	QT-185 CL Quetico	CO-17** Camper	Voyageur (Ultralight)
Gauge	.050	.040	.050	.060	.040	.050	.035
Center Length	15'	17'	17'	17'	18'5"	17'	17'
Maximum Beam	36"	36"	36"	36"	37"	37"	36"
Amidship Depth	14"	13"	13"	13"	13"	13"	12"
Keel Type	All cruising type except on QT-17 WWR which features Whitewater Keel						
No. of Ribs	3	5	3	5	8	5	3
B.I.A. Rated* Capacity/Lbs.	725	735	730	725	795	810	675
Aprox. Weight/Lbs.	64	64	73	83	71	85	57
Curved Center Thwart	•	•	•	Opt.	•	Opt.	Opt.
*Based on B.I.A. Formula **Transom height—16" Max. Rec. H.P.—4				***Ribless Model Also Available Optional Equipment is Available For Dealer Installation			

■ The Alumacraft canoe is renowned for its ruggedness and durability. Quetico cruising models are lightweight and easy to handle in lakes and rivers. The Quetico Whitewater combines toughness with a $\frac{3}{8}$ " deep flat keel for top performance in fast, shallow water. Alumacraft also offers a quality camper outboard canoe and the ultra-light, 57 lb. Voyageur canoe.

- **Overlap design** . . . each side of the hull is preformed, overlapped on the center seam, and spot-welded for greater strength.
- **Flat bottom** . . . a flat bottom provides greater stability and easier paddling than a rocker bottom design.
- **Spotwelding** . . . aircraft-tough spotwelds on ribs, gunwales and center seam eliminate rivet shearing, drag and leakage.
- **Stronger stems** . . . made of .090 gauge solid aluminum, they're thicker and stronger to stand up to rocks, gravel and other obstructions.
- **6010 Marine alloy** . . . lightweight, this remarkable space age alloy is heat treated for greater durability and resistance to punctures and wear.
- **Plus** . . . built in carrying yoke on most models, gas resistant foam flotation, rugged roll seat design, attractive decal, and stainless steel tie-down eyelets.



Features	Classic Deluxe	Classic 16
Plush Olefin Marine Carpet	•	•
Stowable Running Lights	•	•
Bilge Pump	•	•
Interior Courtesy Light	•	•
Upholstered Seats	3	3
Seat Pedestal Sockets	4	4
Aerated Livewell	24 Gal.	24 Gal.
Lockable Rod Compartment	•	•
Lockable Storage Compartment	2	2
Prewired Switch Panel w/Indicator Lights	•	•
Console Steering w/Teak Dash Panel	•	•
Windshield	Opt.	Opt.
Underfloor Accessory Wiring Channel	•	•
Prewired Bow Trolling Receptacle & Plug	•	•
Trim and Tilt Switch	N/A	N/A
Fwd Battery Storage w/Hold down for 105 Amp Battery	•	•
Transom Curtain	•	Opt.
Rod Holders	•	•
Cleats 4 1/2"	4	N/A
Stainless Steel Bow and Ski Tow Eye	•	•
Color Options: Quicksilver Grey Hull with Royal Blue or Grey Interior; Taupe Hull with Brown Interior		
Optional Equipment Is Available For Dealer Installation		

Specifications	Classic Deluxe	Classic 16
Overall Length	16'3"	16'3"
Overall Width	73"	73"
Transom Height	20"	20"
Transom Width	66"	66"
Max. Equiv. Gauge*	.075	.075
Rec. H.P. Range	25-75	25-75
B.I.A. Rated Capacity/Lbs.	1290	1300
Approx. Weight/Lbs.	574	557

*Calculation of maximum equivalent gauge is based on empirical data developed by the automotive industry, and the S.A.E.'s structural requirements to compare resistance to denting for various material and thicknesses. For further information contact Alumacraft Boat Company's Engineering Department.



Classic Deluxe



Classic 16



Classic 16

Classic Deluxe



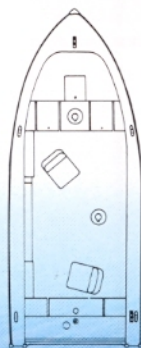
Console Storage

Competitor Series

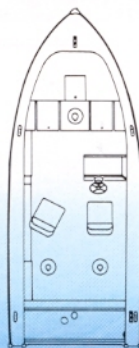
Features	Competitor	Competitor CS
Plush Olefin Marine Carpet	•	•
Interior Courtesy Lights	3	3
Stowable Running Lights	•	•
Upholstered Pedestal Seats	2	2
Adjustable Pedestals	1	2
Stationary Pedestal	1	N/A
Power Pedestals	Opt.	Opt.
Pedestal Sockets	4	5
Fuel Tank w/Gauge	24 Gal.	24 Gal.
Aerated Side Livewell	24 Gal.	24 Gal.
6" Lockable Rod Storage Compartment w/Holders	•	•
6" Cleats	4	4
Bow Deck Storage (Locking)	2	2
Bow 105 Amp Battery Storage	•	•
Locking Storage Compartments	2	2
Locking Electronics Compartments	2	1
Console Steering	N/A	•
Prewired Switch Panel w/Indicator Lights	•	•
Stainless Steel Bow & Tow Eyes	•	•
Bilge Pump	•	•
Battery Holders	2	2
Bow Mount Trim & Tilt Switch and Trailing Motor Plug	•	•
Prewired for Electronics Fore & Aft	•	•
Windshield	N/A	Opt.
Mooring Cover	Opt.	Opt.
Color: Quicksilver Grey Hull with Royal Blue or Grey Interior; Taupe Hull with Brown Interior		
Optional Equipment Is Available For Dealer Installation		

Specifications	Competitor	Competitor CS
Center Line Length	16'4"	16'4"
Maximum Depth	36½"	36½"
Width	79"	79"
Transom Width	76"	76"
Transom Height	20"	20"
Rec. H.P. Range	40-60	50-90
Hull Gauge	Bottom	.080
	Sides	.063
B.I.A. Rated Capacity/Lbs.	1290	1445
Approx. Weight/Lbs.	745	788
Hull Style	Deep Vee	Deep Vee

■ These are serious fishermen's boats. Loaded with the features and appointments that fishermen want. Either Competitor model makes it difficult to consider any other boat. And both are built with safety in mind so you can go after the big fish on big lakes with complete confidence.



Competitor



Competitor CS



Competitor

Competitor CS



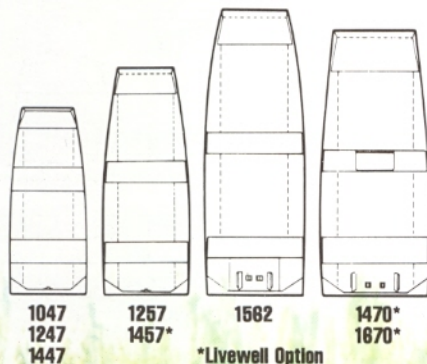
Lockable Electronics Area

Jon Boat Series

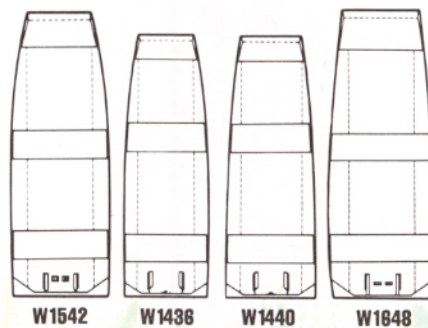
Specifications	Economy Line Jon Boats			Superior Line Jon Boats			Commercial Line Jon Boats					All Welded Jon Boats			
	1047	1247	1447	1257	1457	1457 w/LW	1562	1470	1470 w/LW	1670	1670 w/LW	W1436	W1440	W1542	W1648
Center Length	10'	12'	14'	12'	14'	14'	15'	14'	14'	16'	16'	14'	14'	15'	16'
Maximum Beam	47"	47"	47"	57"	57"	57"	62"	70"	70"	70"	70"	57"	60"	62"	70"
Bottom Width	32"	32"	32"	36"	36"	36"	42"	48"	48"	48"	48"	36"	40"	42"	48"
Transom Height	15"	15"	15"	15"	15"	15"	15"	15"	15"	15"	15"	15"	15"	15"	20"
Side Height	17"	17"	17"	19"	19"	19"	20"	20"	20"	20"	20"	18"	20"	20"	20"
Hull Gauge	.056	.056	.056	.063	.063	.063	.063	.070	.070	.070	.070	.080	.080	.090	.090
Rec. H.P. Range	1-3	4-8	4-10	4-15	6-20	6-20	10-25	10-25	10-25	15-35	15-35	6-20	6-20	10-25	15-35
B.I.A. Rated Capacity/Lbs.	360	455	570	540	625	605	775	885	885	1010	1010	625	740	835	1065
Aprox. Weight/Lbs.	88	100	114	136	149	154	226	240	246	277	283	200	220	280	321
Standard Color: Olive Drab Color Options: Platinum Grey, Taupe (additional Cost)															

■ Alumacraft's basic jon boats are built to offer years of service. Whether used for sport or on the job, these lightweight workhorses fabricated from tough 5052 alloy just keep on performing. Four models feature all-welded hulls. Livewell, steering kit, upholstered seat and trolling/light bracket options on all models add even more versatility.

Riveted Hull Jon Boats



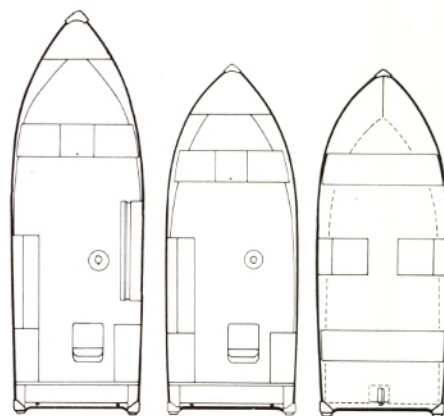
Welded Hull Jon Boats



Features	Lunker V-16 Deluxe	Lunker V-14 Deluxe	Lunker V-14
Plush Olefin Marine Carpet	•	•	•
Upholstered Pedestal Seats	1	1	Opt.
Bench Seats	1	1	2
Seat Pedestal Sockets	2	2	N/A
Livewell	24 Gal.	24 Gal.	12.5 Gal.
Aerator Pump	Opt.	Opt.	Opt.
Rod Holders	•	•	N/A
Console Steering	Opt.	Opt.	Opt.
Windshield	Opt.	Opt.	Opt.
Underfloor Wiring Channel	•	•	•
Lockable Storage Compartment	•	•	N/A
Lockable Rod Compartment	N/A	N/A	N/A
Mooring Cover	Opt.	Opt.	Opt.
Lights	Opt.	Opt.	Opt.

Color Options: Quicksilver Grey Hull with Royal Blue Interior
Optional Equipment Is Available For Dealer Installation

Specifications	Lunker V-16 Deluxe	Lunker V-14 Deluxe	Lunker V-14
Overall Length	16'6"	14'2"	14'2"
Overall Width	70"	68"	68"
Transom Height	20"	20"	15/20"
Transom Width	63"	63"	63"
Hull Gauge	.065	.065	.065
Rec. H.P. Range	15-40	15-35	15-35
B.I.A. Rated Capacity/Lbs.	1315	1130	975/1160
Approx. Weight/Lbs.	500	415	330/335



Lunker V-16
Deluxe

Lunker V-14
Deluxe

Lunker V-14



Lunker V-16 Deluxe

Lunker V-14

Lunker Series

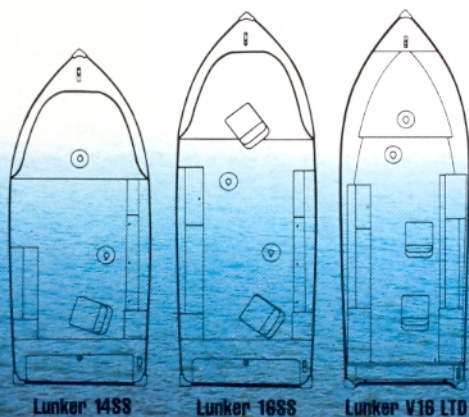
■ We named these boats "Lunker" for a reason. They're designed to let you concentrate completely on fishing with the appointments and accessories that can help you land the big ones. Just pick the size and options you want and then go get 'em.

Specifications	Lunker 14SS	Lunker 16SS	Lunker V16 LTD
Overall Length	14'5"	16'4"	16'6"
Overall Width	73"	73"	70"
Transom Height	20"	20"	20"
Transom Width	66"	66"	63"
Hull Gauge	.075"	.075"	.065"
Rec. H.P. Range	15-40	15-50	15-45
B.I.A. Rated Capacity/Lbs.	1170	1305	1270
Approx. Weight/Lbs.	485	526	496

*Maximum equivalent gauge is a calculation based on empirical data developed by the automotive industry, and the S.A.E.'s structural requirements to compare resistance to denting for various material and thicknesses. For further information contact Alumacraft Boat Company's Engineering Department.

Features	Lunker 14SS	Lunker 16SS	Lunker V16 LTD
Plush Olefin Marine Carpet	•	•	•
Upholstered Pedestal Seats	2	2	2
Bench Seats	N/A	N/A	N/A
Seat Pedestal Sockets	3	4	4
Livewell	24 Gal.	24 Gal.	24 Gal.
Aerator Pump	•	•	•
Rod Holders	•	•	•
Console Steering	Opt.	Opt.	Opt.
Windshield	Opt.	Opt.	Opt.
Underfloor Wiring Channel	•	•	•
Lockable Storage Compartment	N/A	1	1
Lockable Rod Compartment	•	•	•
Mooring Cover	Opt.	Opt.	Opt.
Lights	•	•	•

Color Options: Quicksilver Grey Hull with Royal Blue Interior (all above).
Taupe Hull with Brown Interior (Lunker 14SS and 16SS only).
Optional Equipment Is Available For Dealer Installation



Lunker 14SS

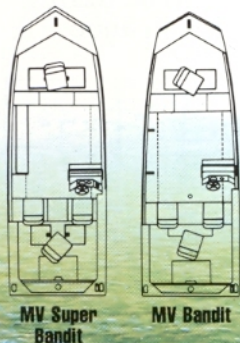
Lunker 16SS

Lunker V16 LTD



Modified-Vee Bass Boat Series

■ Bass fishing at its best was the main design objective of Alumacraft Modified-Vee Bass Boats. Once you spend a day hitting your favorite bass hideouts we think you'll agree. Both are designed to get you to your hot spots fast and then provide you with the ultimate in fishing comfort.



Specifications	MV Super Bandit	MV Bandit
Center Length	17'8"	17'5"
Maximum Beam	74"	72"
Bottom Width	52"	48"
Transom Height	20"	20"
Side Height	23"	21"
Hull Gauge	.075	.072
Rec. H.P. Range	40-90	40-80
B.I.A. Rated Capacity/Lbs.	1205	1020
Approx. Weight/Lbs.	740	600

Features	MV Super Bandit	MV Bandit
Plush Olefin Marine Carpet	•	•
Gas & Battery Compartment Aft	•	•
Raised Casting Decks Fore & Aft	•	•
Aerated Livewell	2	2
Stowable Running Lights	•	•
105 Amp Battery Compartment Forward	•	•
Bilge Pump	•	•
Upholstered Pedestal Seats	2	2
Upholstered Fold Down Seats	2	2
Dry Storage Compartment	•	•
Rod Holders	•	•
Rod Storage Box	•	N/A
Prewired Bow Trolling Receptacle and Plug w/ Trim & Tilt Switch	•	•
Steering Console	•	•
Console Windshield	Opt.	Opt.
Modified Vee Hull	•	•
Modified Vee Bow	•	•
Aluminum Interior Floor	•	•
Wiring Channel	•	•
Insulated Ice Compartment	•	N/A
Prewired Switch Panel w/ Indicator Lights	•	•
Screened Livewell Overflow	•	•
Lockable Storage Compt. w/ Carpeted Lid	•	•
Mooring Covers	Opt.	Opt.
Dry Storage Box	Opt.	Opt.

Color Options: Quicksilver Grey Hull with Royal Blue Interior or Platinum Grey Hull with Royal Blue, Grey or Red Interior.
Optional Equipment Is Available For Dealer Installation

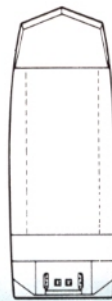


MV Jon Boat Series

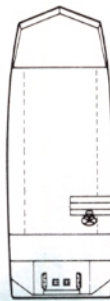
■ The 5°V bottom gives you a smoother jon boat ride and better handling. And thanks to the extremely durable 5052 alloy, you get excellent puncture protection and dent resistance that will last for years. Your Alumacraft Modified V Jon Boat doubles as an ideal sport boat for fishing and duck hunting and as a utility boat for chores that must be done on the water.

Specifications	Superior Line		Commercial Line					MV Tex Line			
	MV 1457	MV 1562	MV 1470	MV 1470 w/LW	MV 1670	MV 1670 w/LW	MV 1870	MV Tex	MV Tex CS	MV Tex Spec	MV Tex Spec CS
Center Length	14'	15'	14'	14'	16'	16'	18'	16'	16'	16'	16'
Maximum Beam	57"	62"	70"	70"	70"	70"	70"	70"	70"	70"	70"
Bottom Width	36"	42"	48"	48"	48"	48"	48"	48"	48"	48"	48"
Transom Height	15"	15"	15"	15"	15"	15"	20"	20"	20"	20"	20"
Side Height	19"	20"	20"	20"	20"	20"	20"	20"	20"	20"	20"
Hull Gauge	.063	.063	.070	.070	.070	.070	.070	.070	.070	.070	.070
Rec. H.P. Range	6-20	10-25	10-25	10-25	15-35	15-35	15-40	15-35	15-50	15-35	15-50
B.I.A. Rated Capacity/Lbs.	625	775	885	885	1010	1010	1195	1010	1010	1010	1010
Aprox. Weight/Lbs.	154	230	245	251	282	288	303	280	300	350	385

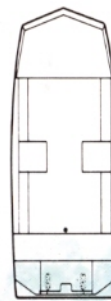
Standard Color: Olive Drab Color Options: Grey, Platinum Grey, Taupe (additional Cost)
Platinum Grey Hull With Royal Blue Interior Standard On MV TEX Special And MV TEX Special CS



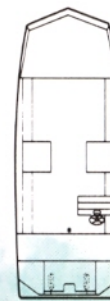
MV Tex



MV Tex CS



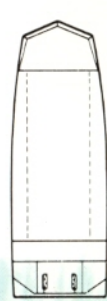
MV Tex Spec



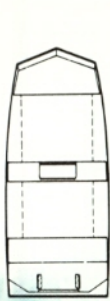
MV Tex Spec CS



MV 1457



MV 1562



MV 1470*
MV 1870*



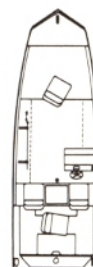
Features	MV Maverick	MV Angler	MV Super Hawk CS
Plush Olefin Marine Carpet	•	•	•
Forward Battery Compartment	•	N/A	N/A
Raised Casting Decks Fore & Aft	•	•	•
Aerated Livewell	2	1	1
Stowable Running Lights	•	•	•
Gas & Battery Compartment Aft	•	•	•
Bilge Pump	•	•	•
Upholstered Fold Down Seats	2	2	2
Upholstered Pedestal Seats	2	2	1
Seat Sockets	2	2	2
Storage Forward & Aft	•	•	•
Rod Holders	•	•	•
Prewired Bow Trolling Receptacle & Plug w/Trim & Tilt Switch	•	•	•
Steering Console	•	•	•
Console Windshield	Opt.	Opt.	Opt.
Modified Vee Hull	•	•	•
Modified Vee Bow	•	•	•
Aluminum Interior Floor	•	•	•
Wiring Channel	•	•	•
Mooring Covers	Opt.	Opt.	Opt.
Dry Storage Box	Opt.	Opt.	Opt.

Color Options: Maverick & Angler: Quicksilver Grey Hull With Royal Blue Interior Or Platinum Grey Hull With Royal Blue, Grey Or Red Interior Super Hawk CS: Quicksilver Grey Or Platinum Grey Hull With Royal Blue Interior
Optional Equipment Is Available For Dealer Installation
The Trim and Tilt switch is not available with the MV Angler

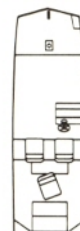
Specifications	MV Maverick	MV Angler	MV Super Hawk CS
Center Length	16'4"	16'	14'11"
Maximum Beam	72"	67"	62"
Bottom Width	48"	42"	42"
Transom Height	20"	20"	20"
Side Height	21"	21"	20"
Hull Gauge	.072	.072	.067
Rec. H.P. Range	40-70	25-50	15-40
B.I.A. Rated Capacity/Lbs.	965	760	815
Approx. Weight/Lbs.	575	485	450



MV Maverick



MV Angler



MV Super Hawk CS



MV Angler

MV Super Hawk CS

MV Maverick

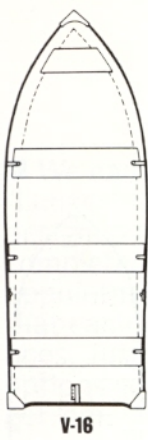


Value/Totalable Series

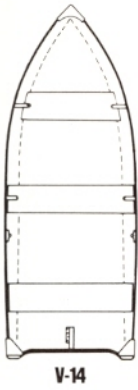
■ Sturdy, roomy and tough. These are standard with Alumacraft's line of basic fishing boats. Quality features include painted aluminum tank seats which are easy to maintain. Of course you get Alumacraft's famous hull that delivers the most for your boating dollar. A high gloss urethane exterior finish is available on all models except the T-12 and T-14.

Specifications	V-16	V-14	T-14S	T-12S	T-14	T-12
Overall Length	16'6"	14'2"	14'0"	12'0"	13'5"	11'10"
Overall Width	70"	68"	55"	53"	53"	53"
Overall Bow Height	32"	31"	26"	26"	25"	25"
Transom Height	15"/20"	15"/20"	15"	15"	15"	15"
Transom Width	63"	63"	52"	52"	47"	47"
Hull Gauge	.065	.065	.065	.065	.050	.050
Rec. H.P. Range	15-40	7.5-25	6-20	6-15	4-10	4-7.5
B.I.A. Rated Cap./Lbs.	1260/1385	1015/1195	725	630	545	470
Approx. Weight/Lbs.	255/260	235/240	161	140	129	115

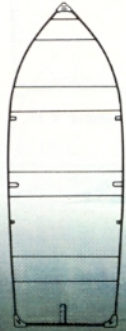
Color: Quicksilver Grey Hull with Royal Blue Interior
Maximum equivalent gauge is a calculation based on empirical data developed by the automotive industry and the S.A.E.'s structural requirements to compare resistance to denting for various material and thicknesses. For further information, contact Alumacraft Boat Company's Engineering Department.



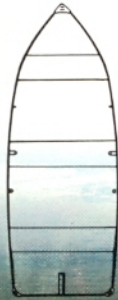
V-16



V-14



T-14S



T-12S



T-14
T-12



Trophy Series

Trophy 190/170 Features	Pedestal Seating	Comb-Pedestal Seating	Duo-Sleeper Seating
Plush Olefin Marine Carpet	•	•	•
Upholstered Pedestal Seats	4/3*	1	N/A
Sleeper Seats	N/A	1	2
Pedestal Sockets	4	2	N/A
Aerated Bow Livewell	30 Gal.	30 Gal.	30 Gal.
Lockable Storage Compartments	2	2	2
Prewired Switch Panel w/Indicator Lights	•	•	•
Battery Holder	•	•	•
Stowable Running Lights	•	•	•
Lockable Glove Compartment	•	•	•
Fuel Tank and Gauge	35/24 Gal.*	35/24 Gal.*	35/24 Gal.*
Rod Storage Compartment	•	•	•
Stainless Steel Bow & Ski Tow Eyes	•	•	•
Windshield/Safety Glass	•	•	•
Lockable Rod Storage Door	•/Opt.*	•/Opt.*	•/Opt.*
Bow Rails	•	•	•
Interior Courtesy Light(s)	•	•	•
Bilge Pump	•	•	•
Windshield Curtain	Opt.	Opt.	Opt.
Sliding Transom Doors	•	•	•
Mooring Cover	Opt.	Opt.	Opt.
Convertible Top Set and Tonneau	Opt.	Opt.	Opt.
Bow Seat Cushions	Opt.	Opt.	Opt.
Bow Casting Platform w/Socket	Opt.	Opt.	Opt.
Power Pedestals	Opt.	Opt.	Opt.

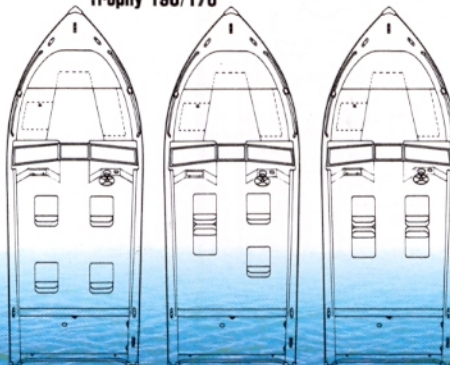
* Trophy 170
Color Options: Quicksilver Grey Hull with Royal Blue or Grey Interior; Taupe Hull with Brown Interior.
Optional Equipment is Available For Dealer Installation.

Trophy 190/170 Specifications	Trophy 190	Trophy 170
Center Line Length	18'10"	16'10"
Maximum Depth	43½"	39½"
Width	90"	79"
Transom Width	82"	76"
Transom Height	20"	20"
Rec. H.P. Range	60-150	60-115
Hull Gauge Bottom	.090	.080
Sides	.080	.080
B.I.A. Capacity	2200	1515
Approx. Weight	1150	875
Hull Style	Deep Vee	Deep Vee

Special rigging on Trophy 190 pictured is not standard

■ Six boats that offer you supreme boating pleasure whether you're chasing your favorite fish or just after a fun-filled day on the water. You'll not only appreciate their quality construction, you'll enjoy their outstanding features: smooth-riding hull, walk-through windshield, upholstered pedestal and/or sleeper seats, plush marine carpeting, live well with pump, lockable storage and much more.

Trophy 190/170



Pedestal Seating
(170/3 Seats)

Comb-Pedestal
Seating

Duo-Sleeper
Seating



Trophy 170



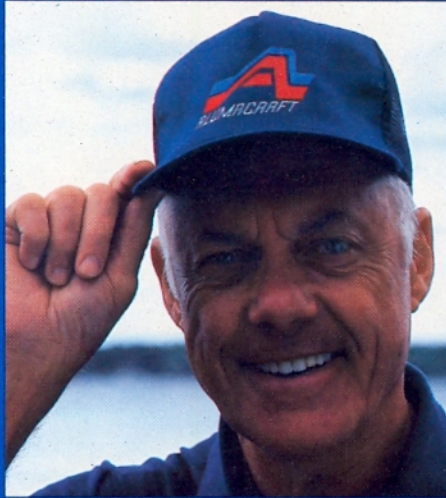
Bow Pedestal Platform

"There's something real special about the fishing experience and Alumacraft makes it even better."

■ "My fishing time is really special and my Alumacraft boat makes it even better.

"I'm not an expert on any one species of fish. I fish for them all: bass, walleye, trout, salmon, pike and musky. I especially enjoy fishing for panfish.

"My favorite fishing is early morning. To watch the day come alive with the singing of the birds and the early, timid moves of the animals and the rising of a bass or trout. There's an exhilaration, a sense of anticipation and peace that can't be matched in another setting. Even when the fish aren't biting it's where I want to be.



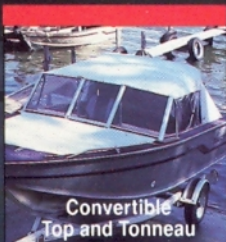
Bud Grant, former head coach for the Minnesota Vikings.

"And when you're with a good friend, well it's just something very special to me. And has been for a long time.

"An Alumacraft boat has been part of my fishing experience since 1951. It makes those precious times even better because I know my boat is built to fish in comfort with worry-free performance. With Alumacraft I know I will spend more time fishing.

"Alumacraft has more than 60 great boats to choose from. You'll find them all in the following pages. And take it from me, one of them is sure to make your fishing experience even more enjoyable."

Bud Grant



Convertible Top and Tonneau