

Alumacraft®

1

♦

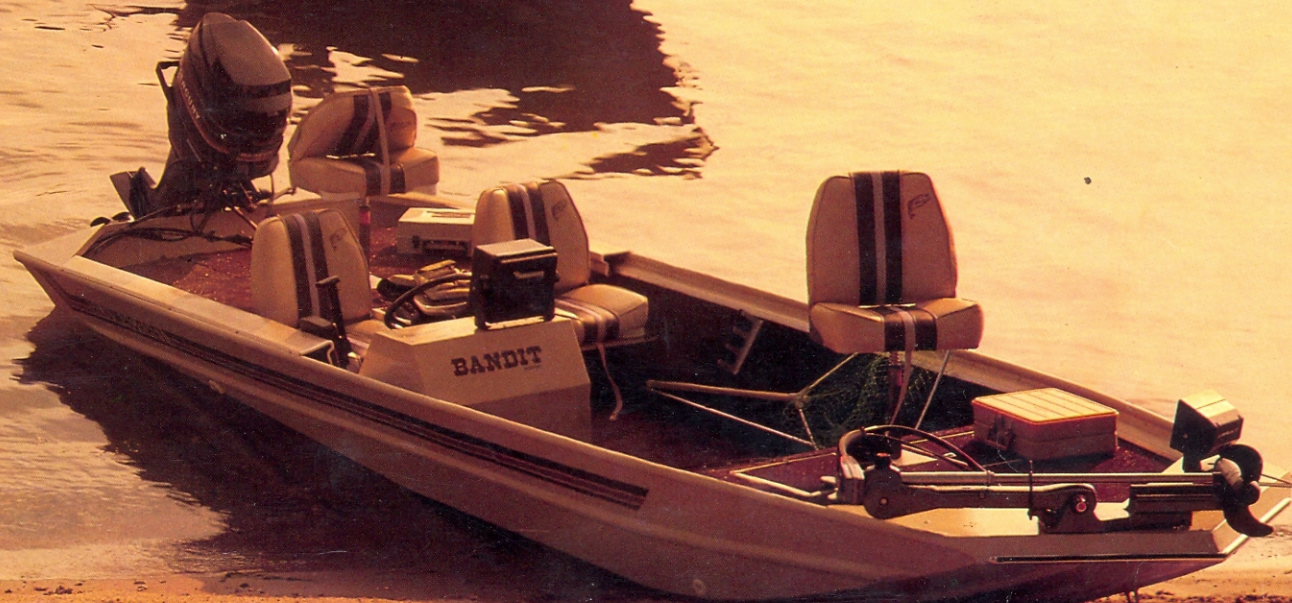
9

♦

8

♦

5



ANGLER & MAVERICK

With modified vee hulls that give you a super smooth ride *plus* a shallow draft and quick plane, the MV Maverick and MV Angler are two more Alumacraft bass boats made to order. They're both loaded with features that make catching the big ones an even bigger pleasure.



Angler



Maverick

Features	MV Maverick	MV Angler
Gas & Battery Compartment Aft	•	•
Raised Casting Decks Fore & Aft	•	•
Aerated Livewell	•	•
Stowable Running Lights	•	•
Deluxe Marine Carpeting	•	•
Bilge Pump	•	•
Upholstered Pedestal Seats	2	2
Upholstered Fold Down Seats	2	N/A
Seat Sockets	2	2
Upholstered Bench Seat	N/A	•
Storage Forward & Aft	•	•
Rod Holders	•	•
Prewired Bow Trolling Receptacle & Plug w/Trim & Tilt	•	•
Steering Console	•	•
Console Windshield	Opt.	Opt.
Modified Vee Hull	•	•
Modified Vee Bow	•	•
Aluminum Interior Floor	•	•
Wiring Channel	•	•

Color Options: Silver Hull with Blue or Red Interior; Beige Hull with Brown Interior

Specifications	MV Maverick	MV Angler
Center Length	16'4"	16'
Maximum Beam	72"	67"
Bottom Width	48"	42"
Transom Height	20"	20"
Side Height	21"	21"
Hull Thickness	.072	.072
Rec. H.P. Range	40-80	25-50
B.I.A. Rated Capacity/Lbs.	960	760
Approx. Weight/Lbs.	575	485

Angler
3
Maverick
4



MV
Angler

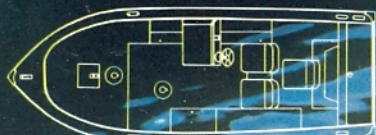


MV
Maverick

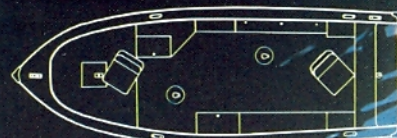
LUXURY Series

Pro 17

Backtroller 17



Pro 17



Backtroller 17

Here are five boats that can really put a lot of luxury into your fishing or pleasure boating. From the deluxe marine carpeting to the sparkling color options, these Alumacraft beauties stand out from the crowd.

Features	Pro 17	Backtroller 17	Classic Deluxe	Classic 16	Sunfisher 16
Deluxe Marine Carpeting	•	•	•	•	•
Stowable Running Lights	•	•	•	•	•
Bilge Pump	•	•	•	•	•
Interior Lights	•	•	•	•	•
Upholstered Seats	4	2	3	3	1
Sleeper Seats	N/A	N/A	N/A	N/A	1
Seat Pedestal Sockets	3	4	3	3	1
Livewell w/Pump	24 gal.	24 gal.	24 gal.	24 gal.	TBD
Livewell Divider	•	•	•	•	N/A
Lockable Rod Compartment	•	•	•	•	N/A
Lockable Storage Compartment	3	3	1	1	N/A
Prewired Fused Accessory Panel	•	•	•	•	•
Console Steering w/Teak Dash Panel	•	Opt.	•	•	•
Windshield	Opt.	Opt.	Opt.	Opt.	•
Underfloor Accessory Wiring Channel	•	•	•	•	•
Wired for Bow Motor	•	•	•	•	N/A
Splashwell Curtain	•	•	•	Opt.	•
Insert for Bow Area Fishing Seat	N/A	N/A	N/A	N/A	Opt.
Rod Holders	•	•	•	•	•
Cleats	•	•	•	N/A	•
Stainless Steel Bow & Ski Tow Eyes	•	•	•	•	•

Color Options: Silver Hull with Blue or Red Interior; Buckskin Hull with Brown Interior

SUPER BANDIT & BANDIT

Bass fishing at its best was the main design objective of the Super Bandit and Bandit. Once you spend a day hitting your favorite bass hide-outs we think you'll agree. Both are designed to get you to your hot spots fast and then provide you with the ultimate in fishing comfort.



Super Bandit



Bandit



MV Super Bandit



MV Bandit

Specifications	Super Bandit	MV Bandit
Center Length	17' 8"	17' 5"
Maximum Beam	74"	72"
Bottom Width	52"	48"
Transom Height	20"	20"
Side Height	23"	21"
Hull Thickness	.075	.072
Rec. H.P. Range	60-90	55-80
B.I.A. Rated Capacity/Lbs.	1205	1020
Approx. Weight/Lbs.	740	600

Super 5

Features	Super Bandit	MV Bandit
Battery Compartment Forward	•	•
Gas & Battery Compartment Aft	•	•
Raised Casting Decks Fore & Aft	•	•
Aerated Livewell	2	2
Stowable Running Lights	•	•
Deluxe Marine Carpeting	•	•
Bilge Pump	•	•
Upholstered Pedestal Seats	2	2
Upholstered Fold Down Seats	2	2
Seat Sockets	2	2
Storage Forward & Aft	•	•
Rod Holders	•	•
Rod Storage Box	•	Opt.
Prewired Bow Trolling Receptacle & Plug w/Trim & Tilt Switch	•	•
Steering Console	•	•
Console Windshield	Opt.	Opt.
Modified Vee Hull	•	•
Modified Vee Bow	•	•
Aluminum Interior Floor	•	•
Wiring Channel	•	•

Color Options: Silver Hull with Blue or Red Interior; Beige Hull with Brown Interior



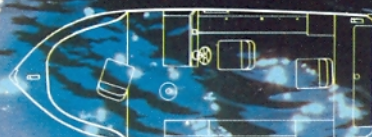
Classic Deluxe



Classic 16



Classic Deluxe



Classic 16



Sunfisher 16**

NEW!

	7	6	6	6	
Specifications	Pro 17	Backtroller 17	Classic Deluxe	Classic 16	Sunfisher 16**
Overall Length	17'5"	17'5"	16'3"	16'3"	16'1"
Overall Width	74"	74"	73"	73"	77"
Transom Height	20"	20"	20"	20"	20"
Transom Width	66"	66"	66"	66"	72"
Max. Equiv. Gauge*	.083	.083	.083	.083	.080
Rec. H.P. Range	25-75	25-50**	25-75	25-75	50-90
B.I.A. Rated Capacity/Lbs.	1370	1385	1290	1300	1500
Approx. Weight/Lbs.	750	675	574	557	700

*with steering installed H.P. rating 75

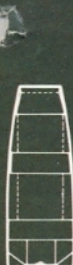
**Approximate specifications

*Calculation of maximum equivalent gauge is based on empirical data developed by the automotive industry, and the S.A.E.'s structural requirements to compare resistance to denting for various material and thicknesses. For further information, contact Alumacraft Boat Company's Engineering Department.

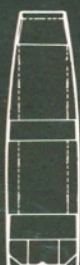
JON BOATS



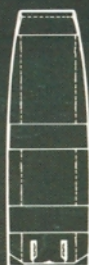
1457 LW



1045
1245
1445



1247
1447



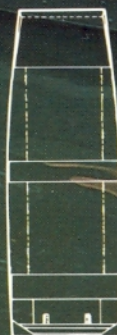
1257
1457*



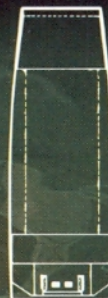
1562*



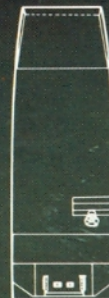
1470*
1670*
1870



1474
1674
1874



TEX II



TEX III**
Steering Included

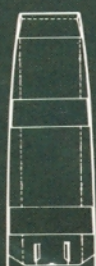
*Livewell Option

NEW!

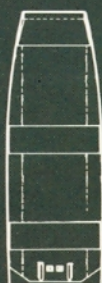
Welded Hull Jon Boats



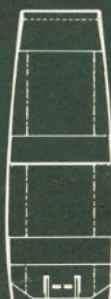
W1436



W1440



W1542



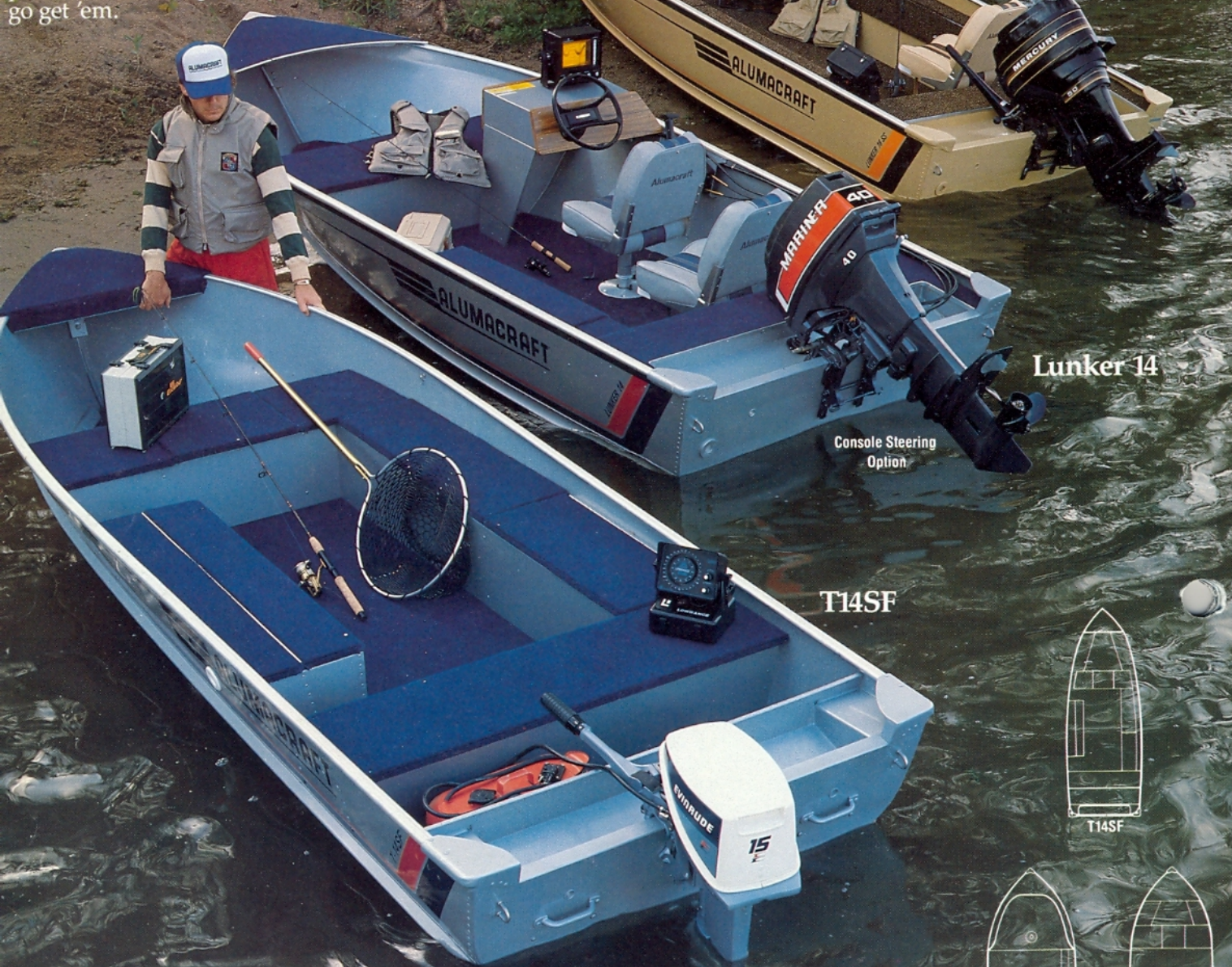
W1648

Specifications		Center Length	Maximum Beam	Bottom Width	Transom Height	Side Height	Hull Thickness	Rec. H.P. Range	B.I.A. Rated Capacity/ Lbs.	Approx. Weight/ Lbs.
ECONOMY LINE JON BOATS	1045	10'	45"	30"	15"	14"	.047	1-3	265	76
	1245	12'	45"	30"	15"	14"	.047	1-5	335	87
	1445	14'	45"	30"	15"	14"	.047	4-7	410	99
SUPERIOR LINE JON BOATS	1247	12'	47"	32"	15"	17"	.063	4-10	455	110
	1447	14'	47"	32"	15"	17"	.063	4-15	570	126
	1257	12'	57"	36"	15"	19"	.063	4-15	540	136
	1457	14'	57"	36"	15"	19"	.063	6-20	625	149
	1457 w/LW	14'	57"	36"	15"	19"	.063	6-20	605	154
COMMERCIAL LINE JON BOATS	1562	15'	62"	42"	15"	19"	.063	10-25	775	226
	1562 w/LW	15'	62"	42"	15"	19"	.063	10-25	580	230
	1470	14'	70"	48"	15"	20"	.070	10-25	885	240
	1470 w/LW	14'	70"	48"	15"	20"	.070	10-25	885	246
	1670	16'	70"	48"	15"	20"	.070	15-35	1010	277
	1670 w/LW	16'	70"	48"	15"	20"	.070	15-35	1010	283
	1870	18'	70"	48"	15"	20"	.070	15-40	1195	295
	1474	14'	74"	52"	20"	21"	.070	15-30	980	294
	1674	16'	74"	52"	20"	21"	.070	15-35	1145	314
	1874	18'	74"	52"	20"	21"	.070	15-40	1265	332
TEX LINE JON BOATS	Tex II	16'	70"	48"	20"	20"	.070	15-35	1010	275
	Tex III**	16'	70"	48"	20"	20"	.070	15-50	1010	300
ALL WELDED JON BOATS	W1436	14'	57"	36"	15"	18"	.067	6-20	625	155
	W1440	14'	60"	40"	15"	20"	.067	6-20	TBD	TBD
	W1542	15'	62"	42"	15"	20"	.090	10-25	775	232
	W1648	16'	70"	48"	15"	20"	.090	15-35	1010	283

Standard Color: Olive Drab
Color Options: Beige, Silver (additional cost)

LUNKER/T14SF Series

We named these boats "Lunker" for a reason. They're designed to let you concentrate completely on fishing with the appointments and accessories that can help you land the big ones. Just pick the size and options you want and then go get 'em.



Lunker 16SS

Lunker 14

T14SF

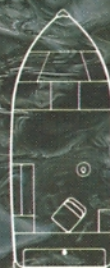
Console Steering
Option



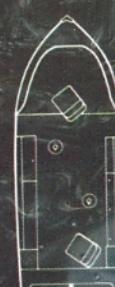
T14SF



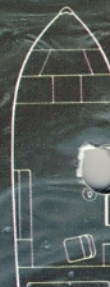
Lunker 14SS



Lunker 14



Lunker 16SS



Lunker 16

Features	Lunker 14	Lunker 14SS	Lunker 16	Lunker 16SS	T14SF
Deluxe Marine Carpeting	•	•	•	•	•
Upholstered Swivel Seats	1	2	1	2	Opt
Bench Seats	1	N/A	1	N/A	2
Seat Pedestal Sockets	2	3	2	4	N/A
Livewell	18 gal.	18 gal.	24 gal.	24 gal.	17 gal.
Lockable Rod Compartment	N/A	•	N/A	•	N/A
Rod Holders	•	•	•	•	N/A
Console Steering	Opt.	Opt.	Opt.	Opt.	N/A
Windshield	Opt.	Opt.	Opt.	Opt.	N/A
Under Floor Wiring Channel	•	•	•	•	•
Bow Storage in Seat	•	N/A	•	N/A	•
Mooring Cover	Opt.	Opt.	Opt.	Opt.	Opt.
Splashwell Curtain	Opt.	Opt.	Opt.	Opt.	N/A

	6	6	7	7	4
Specifications	Lunker 14	Lunker 14SS	Lunker 16	Lunker 16SS	T14SF
Overall Length	14' 5"	14' 5"	16' 4"	16' 4"	14'
Overall Width	73"	73"	73"	73"	56"
Transom Height	20"	20"	20"	20"	15"
Transom Width	66"	66"	66"	66"	56"
Max. Equiv. Gauge*	.083	.083	.083	.083	.065
Rec. H.P. Range	15-40	15-40	15-50	15-50	9.9-25
B.I.A. Rated Capacity/Lbs.	1170	1170	1305	1305	725
Approx. Weight/Lbs.	470	485	522	526	300

*Calculation of maximum equivalent gauge is based on empirical data developed by the automotive industry, and the S.A.E.'s structural requirements to compare resistance to denting for various material and thicknesses. For further information, contact Alumacraft Boat Company's Engineering Department.

Color Options: Lunker Series—Silver Hull with Blue Interior; Buckskin Hull with Brown Interior; T14SF—Silver with Blue Interior only

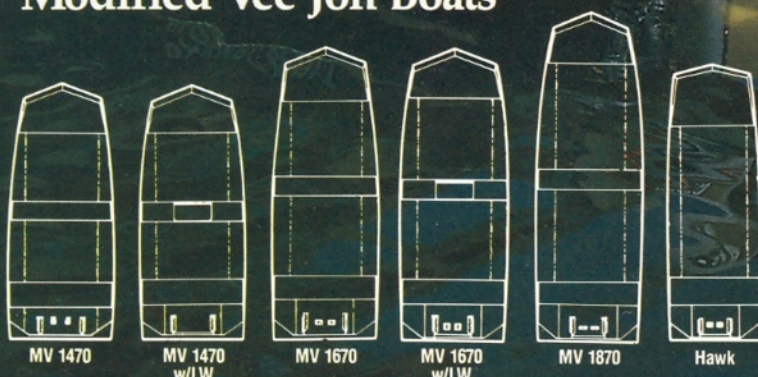
MV JON BOATS

MV 1670



Modified Vee Jon Boats

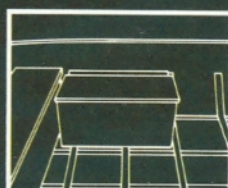
Thanks to the extremely durable 5052 alloy, you can expect years of service from your Alumacraft jon boat. You can get excellent puncture protection and dent resistance in these lightweight workhorses. They double as ideal sport boats for fishing and duck hunting and as a utility boat for chores that must be accomplished on the water. The 5°V bottom to the transom gives you better handling and a smooth ride.



Specifications	Commercial MV-Bow					
	MV 1470	MV 1470 w/LW	MV 1670	MV 1670 w/LW	MV 1870	Hawk
Center Length	14'	14'	16'	16'	18'	14'11"
Maximum Beam	70"	70"	70"	70"	70"	62"
Bottom Width	48"	48"	48"	48"	48"	42"
Transom Height	15"	15"	15"	15"	20"	15"
Side Height	20"	20"	20"	20"	20"	20"
Hull Thickness	.070	.070	.070	.070	.070	.072
Rec. H.P. Range	10-25	10-25	15-35	15-35	15-40	10-25
B.I.A. Rated Capacity/Lbs.	885	885	1010	1010	1195	795
Approx. Weight/Lbs.	245	251	282	288	303	285

Standard Color: Olive Drab
Color Options: Beige, Silver (additional cost)

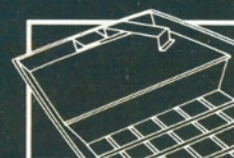
OPTIONS



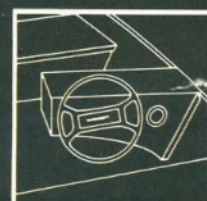
Livewell



Upholstered Seat & Clamp



Trolling & Light Brackets



Steering Kit

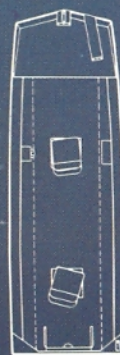
SUPER HAWK & SUPER HAWK SS



Super Hawk



MV
Super Hawk



MV
Super Hawk SS
(stick steering)

Super fishing with super economy. No wonder we call it the Super Hawk. All the essentials for great bass fishing in a compact, easy-to-trailer package you can get into for a minimum investment. Alumacraft quality all the way, too.

Persons
3

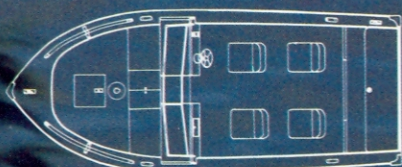
Specifications	MV Super Hawk	MV Super Hawk SS (stick steering)
Center Length	14'11"	14'11"
Maximum Beam	62"	62"
Bottom Width	42"	42"
Transom Height	15"	15"
Side Height	20"	20"
Hull Thickness	.072	.072
Rec. H.P. Range	15-25	15-25
B.I.A. Rated Capacity/Lbs.	765	760
Approx. Weight/Lbs.	330	345

Features	MV Super Hawk	MV Super Hawk SS
Battery Compartment Aft	•	•
Non-Aerated Livewell	•	•
Stowable Running Lights	N/A	•
Deluxe Marine Carpeting	•	•
Upholstered Pedestal Seats	2	2
Prewired Bow Trolling Receptacle & Plug	•	•
Modified Vee Hull	•	•
Aluminum Interior Floor	•	•
Wiring Channel	•	•

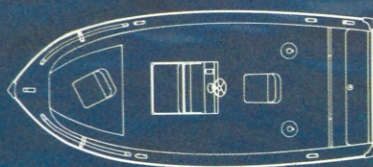
Color Options: Silver Hull with Blue or Red Interior,
Beige Hull with Brown Interior

PAD VEE Series

Our "Pad Vee" design gives you a smoother, drier ride and incredible planing characteristics. The secret is a 12" pad or step on the bottom of the hull beginning at the transom and tapering toward the bow. And with aircraft-type frame reinforcement and our stretch-formed hull, the "Pad Vee" is one of the toughest boats you can buy.



Trophy 180



Sportsman 180

Features	Trophy 180	Sportsman 180
Deluxe Marine Carpeting	•	Vinyl
Stowable Running Lights	•	•
Bilge Pump	•	•
Interior Lights	•	•
Upholstered Seats w/Locking Adjustable Pedestal	4	•
Sleeper Seats	Opt.	N/A
Seat Pedestal Sockets	3	2
Livewell w/Pump	38 gal.	42 gal. (opt.)
Lockable Rod Compartment	•	N/A
Lockable Storage Compartment	3	N/A
Prewired Fused Accessory Panel	•	•
Console Steering	•	•
Windshield	•	•
Convertible Top Set & Tonneau	Opt.	Opt.
Bimini Top	N/A	Opt.
Mooring Cover	Opt.	Opt.
Bow Storage	•	•
Built-in Fuel Tank	20 gal.	N/A
Flipper Board	•	•
Bow Rails	•	•
Cleats	4	4
Stainless Steel Bow & Ski Tow Eyes	•	•
Glove Compartment	•	N/A
Molded Fishing Chair w/Locking Adjustable Pedestal	N/A	Opt.
Console Rail	N/A	Opt.

Color Options: Sportsman 180—White Hull with Blue Interior; Trophy 180—Silver Hull with Blue or Red Interior; Buckskin Hull with Brown Interior

6
7

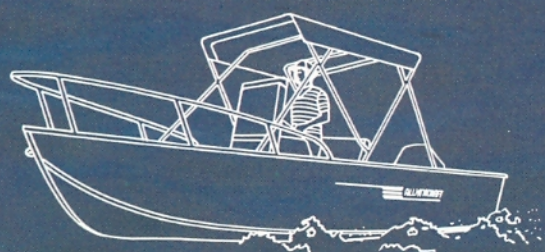
Specifications	Trophy 180	Sportsman 180
Overall Length	17'6"	17'6"
Overall Width	85"	85"
Transom Height	20"	20"
Transom Width	77"	77"
Max. Equiv. Gauge*	.090	.090
Rec. H.P. Range	50-120	50-120
B.I.A. Rated Capacity/Lbs.	1550	1560
Approx. Weight/Lbs.	1015	825

*Calculation of maximum equivalent gauge is based on empirical data developed by the automotive industry, and the S.A.E.'s structural requirements to compare resistance to denting for various material and thicknesses. For further information, contact Alumacraft Boat Company's Engineering Department.

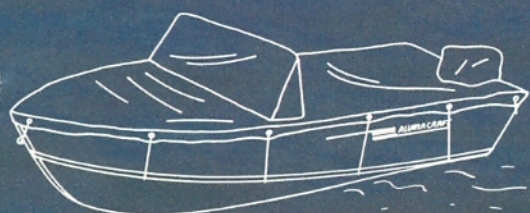


Trophy 180

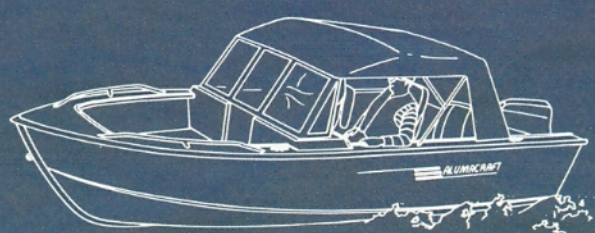
OPTIONS



Sportsman 180 Bimini Top



Mooring Cover



Trophy 180 Top

CANOES



The AlumaCraft canoe is renowned for its ruggedness and durability. Quetico cruising models are lightweight and easy to handle in lakes and rivers. The Quetico Whitewater combines toughness with a $\frac{3}{8}$ " deep flat keel for top performance in fast, shallow water. AlumaCraft also offers a quality camper outboard canoe and the ultralight, 57 lb. Voyageur canoe. For complete canoe construction details see page 3.

Specifications	QT-15 C Quetico	QT-17 CL Quetico	QT-17 C Quetico	QT-17 WWR Quetico	QT-185 CL Quetico	**CO-17 Camper	Voyageur (Ultralight)
Gauge	.050	.040	.050	.060	.040	.050	.035
Center Length	15'	17'	17'	17'	18'5"	17'	17'
Max. Beam	36"	36"	36"	36"	37"	37"	36"
Amidship Depth	14"	13"	13"	13"	13"	13"	12"
Keel Type	All cruising type except on QT-17 WWR which features Whitewater Keel						
No. of Ribs	3	5	3	5	8	5	3
B.I.A. Rated* Capacity/Lbs.	725	735	730	725	795	810	680
Approx. Weight/Lbs.	64	64	73	83	71	85	57

*Based on B.I.A. 3 4 4 4 4 4 4

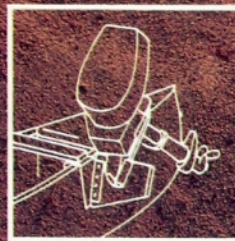
**Transom height-16", Max. Rec. H.P.-4



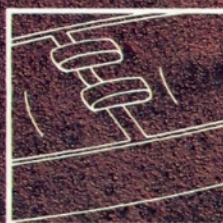
Quetico Cruiser $\frac{5}{8}$ " keel
Voyageur
CO 17



Quetico Whitewater $\frac{3}{8}$ " keel



Outboard Motor Bracket



Portage Pads



QT-17 WWR Deck Plate

TOTAL & ECONOMY V Series

Sturdy, roomy and tough. These are standard with Alumacraft's line of basic fishing boats. Quality features include painted aluminum tank seats which are easy to maintain. Of course you get Alumacraft's famous hull that delivers the most for your boating dollar. Painted seats (available on all models) and high gloss exterior finish are available on all models except the T-12 and T-14.



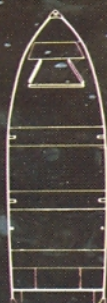
T-16XL

T-14S

T-12



T-14XL
15/20



T-16XL
15/20



T-14S



T-12S



T-14



T-12

V 14 15" 5 persons 25 hp 1015 max ft
20" 7 40 hp 1260
V 16 15" 8 40 hp 1385 ft

ECONOMY V Series

NEW!



V-12



V-14



V-16

Specifications	T-14XL	T-16XL	T-14S	T-12S	T-14	T-12
Overall Length	14'4"	16'5"	14'0"	12'0"	13'5"	11'10"
Overall Width	65"	66"	55"	55"	53"	53"
Overall Bow Height	33"	33"	26"	26"	25"	25"
Transom Height	15"/20"	15"/20"	15"	15"	15"	15"
Transom Width	61"	61"	52"	52"	47"	47"
Max. Equiv. Gauge*	.083	.083	.065	.065	.050	.050
Rec. H.P. Range	10-35	15-45	6-20	6-15	4-10	4-7.5
B.I.A. Rated Capacity/Lbs.	880/1010	1070/1215	630	550	470	
Approx. Weight/Lbs.	240/246	281/287	161	140	129	115

*Calculation of maximum equivalent gauge is based on empirical data developed by the automotive industry, and the S.A.E.'s structural requirements to compare resistance to denting for various material and thicknesses. For further information, contact Alumacraft Boat Company's Engineering Department.

Specifications	V-12	V-14	V-16
Overall Length	12'4"	14'6"	16'6"
Overall Width	58"	67"	72"
Overall Bow Height	28"	30"	31"
Transom Height	15"	15"/20"	15"/20"
Transom Width	54"	63"	68"
Bottom Gauge	.065	.065	.065
Rec. H.P. Range	6-15	7.5-25	15-45
B.I.A. Rated Capacity/Lbs.	TBD	TBD	TBD
Approx. Weight/Lbs.	150	200/225	250/260